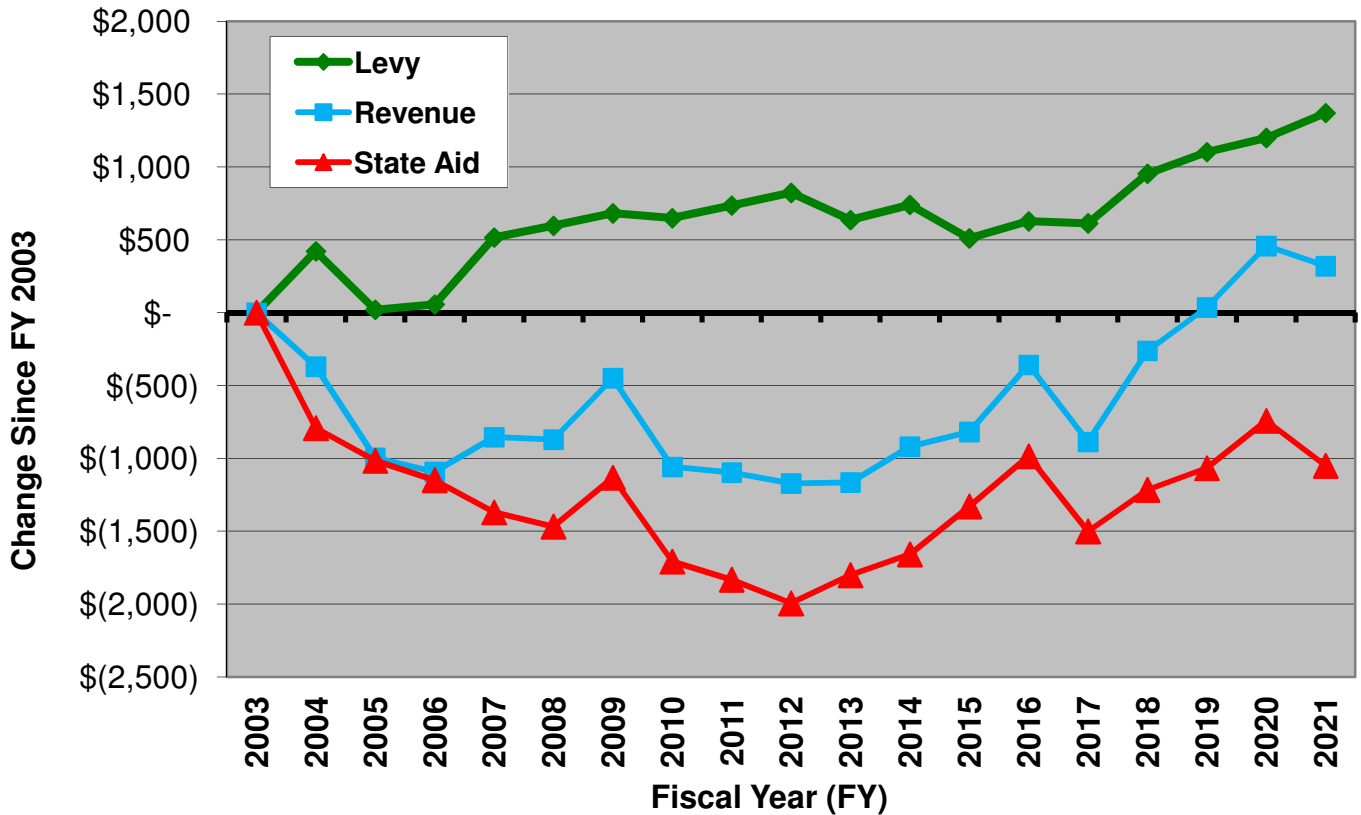


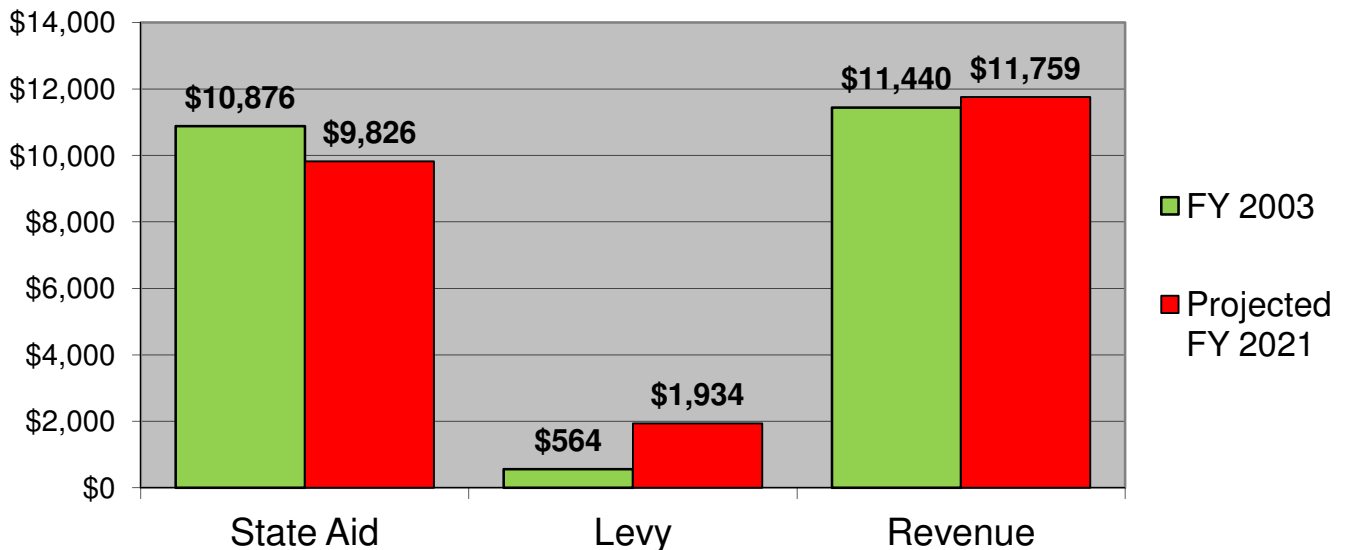
Lewiston-Altura School District

All Amounts in Constant FY 2019 Dollars

Change in Per Pupil School Operating Aid, Levy, and Revenue Since FY 2003



Total Per Pupil School Operating Aid, Levy, and Revenue: FY 2003 and Projected FY 2021



NORTH STAR POLICY INSTITUTE

www.northstarpolicy.org